

SPECIFICATIONS:



	pH	ORP
RANGE	0.00 to 14.00	±1000 mV
RESOLUTION	0.01	1 mV
ACCURACY (@25°C)	±0.2	± 5 mV
SETPOINT	4 to 8 pH	-200 to 600 mV
ELECTRODE (included)	MA911B/2	MA921B/2
ALARM & OUTPUT POWER SOCKET	active when measurement is higher lower	
ENVIRONMENT	than the setpoints 0 to 50°C, 95% RH max.	
POWER SUPPLY	12 VDC (included)	
POWER DRIVERS	115VAC, 2A, 60Hz or 230VAC, 1A, 50Hz	
DIMENSIONS	160 x 80 x 40 mm	
WEIGHT	220 g meter only	

OPTIONAL ACCESSORIES:

M10004B	pH 4.01 buffer solution 20 ml sachet (25 pcs)
M10007B	pH 7.01 buffer solution 20 ml sachet (25 pcs)
M10010B	pH 10.01 buffer solution 20 ml sachet (25 pcs)
M10000B	Electrode rinse solution 20 ml sachet (25 pcs)
MA9015	Electrode storage solution 20 ml sachet (25 pcs)
MA950	Portable meter wall fixing kit

WARRANTY:

This instrument is warranted from all defects in materials and manufacturing for a period of **two years** from the date of purchase.

The electrodes are warranted for a period of 6 months.

If during this period, repair or replacement of parts is required, where the damage is not due to negligence or erroneous operation by the user, please return the parts to either dealer or our office and the repair will be effected free of charge.

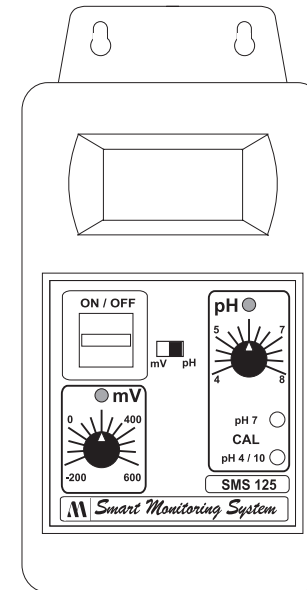
Note: We reserve the right to modify the design, construction and appearance of our products without advance notice.



USER MANUAL

**PORTABLE
pH / ORP COMBINED METER
MODEL: SMS125**

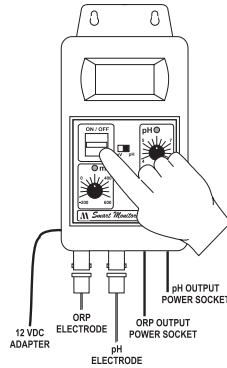
Smart Combined System



ISMIL 125 12/01

OPERATION:

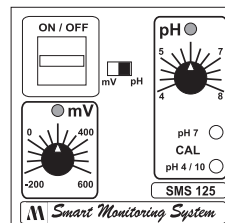
- Connect the supplied 12 VDC power adapter to the meter and to the mains.
- Connect the pH and ORP electrode to the BNC socket of the meter.
- Always remove the electrode protective caps before taking any measurement. If the electrodes have been left dry, soak the tip (bottom 2.5 cm) in rinse solution (M10000B) for a few minutes to reactivate them.
- Make sure that the meter has been calibrated before taking any measurements (see Calibration Procedure).
- Immerse the tip (2.5 cm) of the electrodes into the samples.
- Turn the instrument on by pressing the ON/OFF key.
- Allow the reading to stabilize and the meter will start continuous monitoring.
- A blinking alarm LED will indicate when the measured pH value is higher than the setpoint and ORP value is lower than setpoint.
- When the alarm LED is blinking, there is power in the output power socket.



NOTE: The output power contact has no protection fuse inside the meter. It is recommended to protect it outside, against failure.

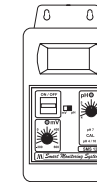
SETPOINT:

- The setpoint can be selected by adjusting the knob to the desired value.
- The selectable range for SMS125 is from 4 to 8 for pH and from -200 to 600 mV for ORP.



CALIBRATION PROCEDURE:

- Remove the protective cap from the pH electrode.
- Immerse the electrode tip into a new sachet of pH 7 calibration solution and allow the reading to stabilize.
- Adjust the OFFSET calibration trimmer (on the front) to display "7.00 pH".
- Open a new sachet of pH 4 calibration solution and use a small quantity to rinse the electrode.
- Immerse the electrode tip inside the pH 4 sachet and allow the reading to stabilize.
- Adjust the SLOPE calibration trimmer (on the front) to display "4.00 pH".
- The calibration is now complete and the meter is ready to take measurements.
- It is suggested to recalibrate the meter at least once a month, after prolonged warehousing time and after pH electrode replacement.



INSTALATION PROCEDURE:

